



Chester Northgate Development and Ellesmere Port Public Service Hub

Chester Northgate Development and Ellesmere Port Public Service Hub

CONTENTS

Introduction.....	1
Chester Northgate Development	
Project Progress	2
Chester Northgate Construction Timeline.....	3
Drainage Tunnel Progress.....	5
Archaeology at Chester Northgate.....	7
Social Value Activities.....	8
Ellesmere Port Public Service Hub	
Project Progress	11
Ellesmere Port Public Service Hub Construction Timeline	12
Social Value Activities.....	13
VINCI Foundation	17

INTRODUCTION

At VINCI we are committed to delivering Social Value to the people who live in the Cheshire West and Chester (CWaC) borough.



A handwritten signature in black ink that reads "G Bowker".

Garry Bowker
REGIONAL
DIRECTOR

We believe Social Value is about creating a positive change in someone's life, and the value that creates whether through supporting a person, a community, a local business or improving the area they live in.

Through our delivery of the exciting Chester Northgate Development and providing a new Public Service Hub at Ellesmere Port we can and will ensure that we not only deliver fantastic facilities but leave a lasting legacy of social, economical and environmental betterment.

We create Social Value every day by employing local people, procuring our supply chain, employing apprentices and providing people with the training they need to progress, to name a few.

These actions all have a positive effect on peoples' lives. We deliver Social Value on all our construction projects and we have Key Performance Indicators to ensure everybody benefits from our actions.

This booklet provides a current overview of the projects and provides you with an update on our social value activities to date.



CHESTER NORTHGATE DEVELOPMENT PROJECT PROGRESS

Work is progressing well at the Chester Northgate project. The steel frame has progressed on the extension to the existing Hunter's Walk building and the new market and cinema building. Groundworks are also progressing well on the multi-storey car park and the steel frame is ongoing.



Jonathan Roberts
SENIOR
PROJECT MANAGER

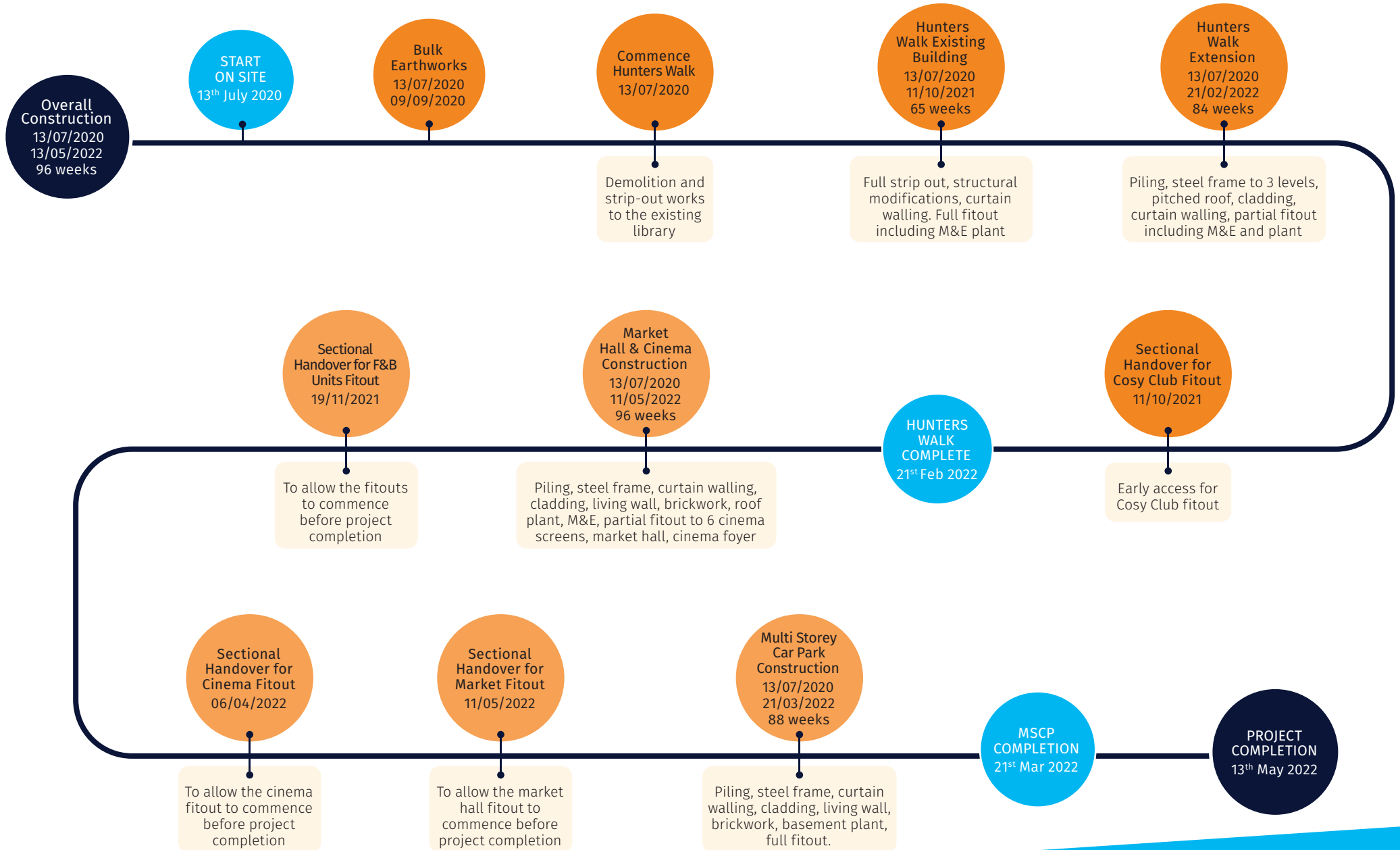
The project is on track and the following key activities have been completed:

- Phase 1 & opening of Hunter Street
- Hunters Walk steel frame
- Retaining walls
- Cinema terrace seating to screens 4 & 5
- Concrete core 1 to MSCP

As we progress over April and May the following key activities will be progressed:

- Hunters Walk – Roofing & Substation foundations
- Market & Cinema – Upper floor concrete slab
- MSCP – Steel frame & upper floor slabs
- External – Lift pit & AG wall construction







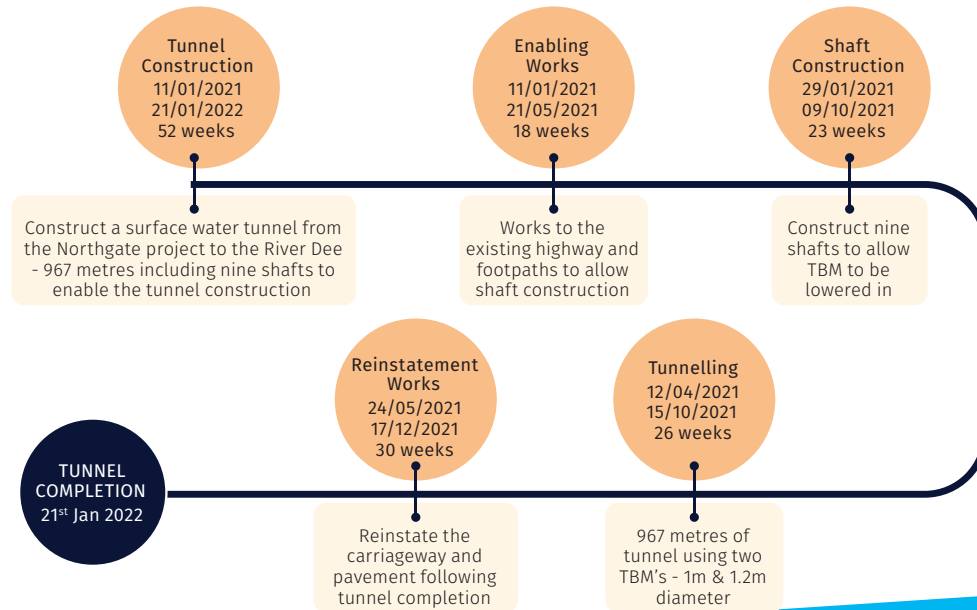
DRAINAGE TUNNEL PROGRESS

Works have begun on the 1km long tunnel under Chester city centre. The tunnel will provide a new main surface water drain that runs from the Chester Northgate development out to the River Dee. The works in summary consist of:

- 9 deep access shafts, that provide access for future maintenance in the completed state but act as “drive” and “reception” shafts for the tunnel boring machine during the works;
- A 1km long, 1200mm – 1500mm diameter tunnel;
- An outfall into the River Dee that requires us to form a small cofferdam in the river bank;
- Significant traffic management around the city centre to enable the multiple work compounds around the city ring road to be created;
- Highways alteration and reinstatement works.

The shaft construction works are currently underway and the tunnel boring machine arrived on site in early April.

TUNNEL TIMELINE



DRAINAGE TUNNEL PROGRESS PHOTOS



“ Andrew Lewis, Chief Executive of Cheshire West and Chester Council, said:
The new drain is a major future-proof investment in Chester’s recovery from the pandemic, and an essential requirement ahead of our major regeneration schemes, including the Northgate development. This is the biggest infrastructure project in Chester for decades. ”

ROMAN ARTEFACTS AT CHESTER NORTHGATE

Archaeologists working on Chester Northgate construction site have discovered Roman artefacts including what is thought to be a rare gaming piece made from bone. The lozenge-shaped gaming piece is highly polished, probably from use, is approximately 29mm long and features a common Roman decoration of a ring and dot motif. Experts link this to the game of Ludus Latrunculorum, meaning the Game of Mercenaries, which was a two-player military strategy board game played throughout the Roman Empire, similar to draughts. Other artefacts found to date include another bone artefact, possibly a comb; a possible spearhead; and a pin or broach.

VINCI's project team and archaeologists Oxford Archaeology, have been carefully excavating to find signs of Roman life and other historical artefacts.



However, despite all of the activity on site, the construction will not result in any major intrusion into the important archaeological remains which remain undisturbed as the works proceed.

The new buildings have been carefully designed to avoid disturbance of archaeological remains as far as possible and a comprehensive mitigation strategy overseen by Historic England is in place to ensure intrusions into the most sensitive strata are kept to an absolute minimum.

ROMAN STONE RECOVERED FROM CHESTER NORTHGATE TO BE USED IN CITY WALLS REPAIR

Roman stone blocks found in excavations during the Chester Northgate's construction are to be used to repair the city walls

Archaeologists believe the red sandstone blocks are likely to have been quarried locally in either the Groves area near the river or in the vicinity of Delamere Street and George Street, around two thousand years ago. The blocks will be dressed ready for use in repairing the city walls to provide a perfect match with sandstone used when the walls were first built.



Two generations of local stonemasons, father and son, Martin and Jack Rigby working on the city walls in Nun's Road, using Roman stone blocks recovered from the Northgate site

10,903 Roman Fragments uncovered



Andrew Davison, Historic England's Inspector of Ancient Monuments for the North West recently visited the Northgate site to inspect the work to date. He said:

Chester residents are unusually knowledgeable about the City's heritage, including its archaeology, so these finds will excite great interest.

They speak volumes about the quality of the archaeology we are dealing with at this very significant site and I look forward to seeing more finds from the site as work continues.

Councillor Richard Beacham, Cabinet Member for Housing, Regeneration and Growth, said:

Chester is truly alive with history, and it is pleasing to see such interesting artefacts unearthed as we begin the long-awaited construction at Northgate.

We will be treading very carefully to protect the sensitive archaeological remains on the site and we will be adding anything we find to our impressive collection of Roman artefacts at the Grosvenor Museum.

SOCIAL VALUE ACTIVITIES

1 CELEBRATING INTERNATIONAL WOMEN'S DAY

International Women's Day on 8 March is an opportunity to showcase women and encourage them to pursue brilliant careers as engineers, manual workers, architects, along with many more career lines open to all women.

In Building Division we celebrated #IWD2021 with VINCI Construction UK's Cheryl Watt, Construction Manager with 37 yrs experience, Clare Huber, CWAC Head of Construction with 21 yrs and Rachel Hughes, VINCI Apprentice into her 5th month of training, who are working on our Chester Northgate project.



Rachel Hughes, undertaking an Apprenticeship as a Design & Build Technician said:

Being a practical individual, finding an Apprenticeship in the construction industry was always my first choice, however, due to Covid-19 and the shortage of Apprenticeships available, university subsequently became my fall-back option.

However as soon I saw the job advertised as a Design & Build Technician, I had no hesitation in applying. With this Apprenticeship I've had a fantastic opportunity to gain valuable on site experience with the benefits of earning whilst I'm learning and becoming a valued member of the Northgate team.



2 NORTHGATE DEVELOPMENT BOOSTS APPRENTICE NUMBERS

To date eleven Apprentices have been employed to work on the Chester Northgate development within the first six months of the scheme's construction.

Both the Council, VINCI Construction UK and their sub-contractors, have all demonstrated a strong commitment to ensuring the development can offer opportunities for young people to forge a career in the construction industry.

Two of VINCI's Apprentices include Rachel Hughes, who is undertaking an Apprenticeship as a Design & Build Technician and Matthew Peterson who is in his second year of completing a HND in Construction and the Built Environment.

Both Rachel and Matthew looked at university but chose an Apprenticeship as an opportunity to get into the industry and further his education to degree level.



Leader of Cheshire West and Chester Council, Louise Gittins said:

We stand united with VINCI Construction UK in our commitment to providing opportunities for young people as a result of the Northgate development; we look forward to seeing further Apprentices benefiting from our long-awaited transformation of Chester city centre.





SOCIAL VALUE ACTIVITIES

3 CAR PARK UPGRADE AT CHESTER FOOTBALL CLUB

We partnered with Chester FC – who are a community-driven club by – to upgrade their Deva Stadium car park by doing much needed work filling in potholes in their car park free of charge.

Colin Rankin, Business Development Director from VINCI Construction UK said: “Wherever possible VINCI always tries to help the local community and we are delighted to be able to support Chester FC with the works this week. Being local residents and keen supporters of Chester FC, this really is special.”

4 SUPPORTING LOCAL STUDENTS FROM CHESHIRE COLLEGE SOUTH AND WEST

It is extremely important to continue to support our local students during the pandemic.

On 10 February our Chester Northgate team held a “live classroom” Teams meeting with local students from Cheshire College South and West to speak about various subjects on construction, which featured the development built via 3D time lapse animation.

The online events have been arranged to take place twice a month with 10 students engaging with one of our VINCI team on site.

We are also looking to invite other local schools to these events in the near future so they may benefit from these discussions too.

VINCI Construction UK’s Construction Manager, Ashley Rogan organised the meeting and there was a questions/answers section at the end.



Cheshire College South & West

Commercial Director Paul Bodman said:

I’m delighted we have teamed up with VINCI Construction UK to do repair work on the car park. I would like to thank Colin Rankin, Andrew Kelly and Jonathan Roberts for their hard work in helping to set up this partnership.

We are a fan-owned, community football club and this partnership shows the commitment VINCI has to local community projects. I look forward to a long and beneficial working relationship between VINCI and Chester FC.



5 ‘MOVEMBER’ FUNDRAISER

During November the VINCI site team at Chester Northgate took part in a very successful ‘Movember’ fundraising event. The challenge was to begin with a ‘clean shaven’ face and after a period of 30 days attempted to grow their facial hair in various guises. The team were delighted to present to The Bluecoat Chester, a cheque for £2,300.00!

This local charity ‘Outside In’ works to tackle poverty, disadvantaged and inequality around the city.



5

5 FOOD BANK – SALTNEY

As part of our fundraising efforts for Chester we set up a FOOD BANK to help out the local community. The Chester Northgate team collated items of food from a shopping list suggested by the charity. On 11th December we made a donation at the "drop off" point at The Lache Community Centre in Saltney, to benefit West Cheshire Food bank.



6

6 STUDENT VISITS TO SITE

The students at Cheshire College South and West enjoyed a visit to site in the autumn of last year.

This visit was praised unanimously by the college and they would like to return as they found it so beneficial to their learning journey. We have been and are continuing with, workshop discussions remotely until we are allowed to invite the students back to site.



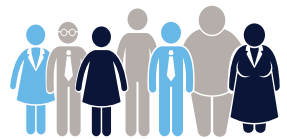
7

7 DEFIBRILLATOR SLAB LAYING

A local community centre in Chester recently had a new defibrillator installed. Our VINCI Team were on hand to prepare a 'safe' ground base for anyone using the machine, by laying the appropriate slabs.

Lache Neighbourhood and Partnership Manager, Sharon Marshall, for Cheshire West and Chester Council, was delighted that we could help them out with this important feature.

SOCIAL VALUE KPI UPDATE - APRIL 2021



ELLESMERE PORT PUBLIC SERVICE HUB PROJECT PROGRESS

We continue at pace with the Public Service Hub at Ellesmere Port. Having successfully handed over the new Bus stands and completed the highways alterations, we are focussing on the new Headquarters building. The steel frame is complete and we are progressing with the building envelope.



Steve Roberts
SENIOR PROJECT MANAGER

The project is on track and the following are key activities for the coming months:

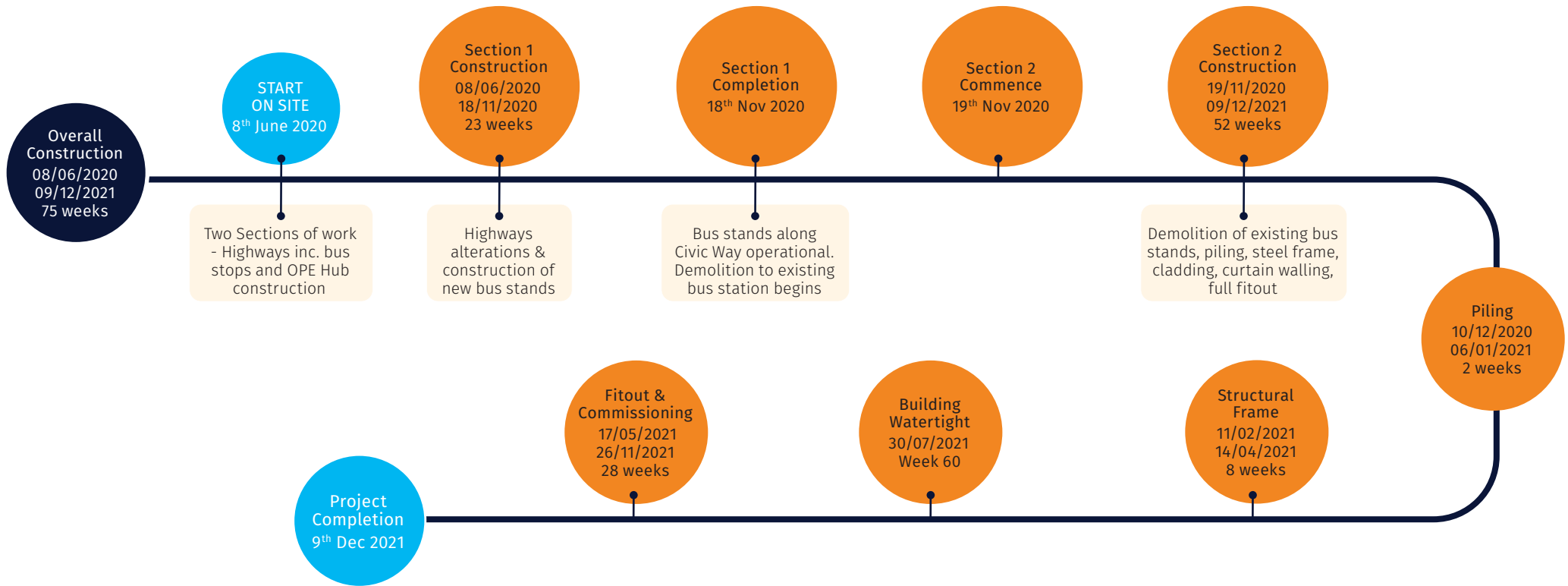
- Concrete to the floor decks to levels 1 & 2 are due commence from the 29th March. The average pour size will be 140m³ over 3 pours. A total of 420m³ concrete
- Concrete to ground floor to commence. Total m3 capacity of 274m³
- Commence the SFS to levels 1 & 2
- Installation of the main roof to commence



Clare Hayward MBE DL, Chair, Cheshire and Warrington Local Enterprise Partnership said:

It's great to see construction underway for the Bus Zone and Public Services Hub. It is an important step in the ongoing regeneration of Ellesmere Port town centre, helping to make it easier for people to work and shop in the town, when completed. Delivering construction projects at this time is an important part of restarting our economy and VINCI's expertise will allow them to do so in a measured and safe way.





SOCIAL VALUE KPI UPDATE - APRIL 2021

6 Education Activities



7 Community Engagement Activities



Apprentice Weeks 73



£363,845 Return on Investment



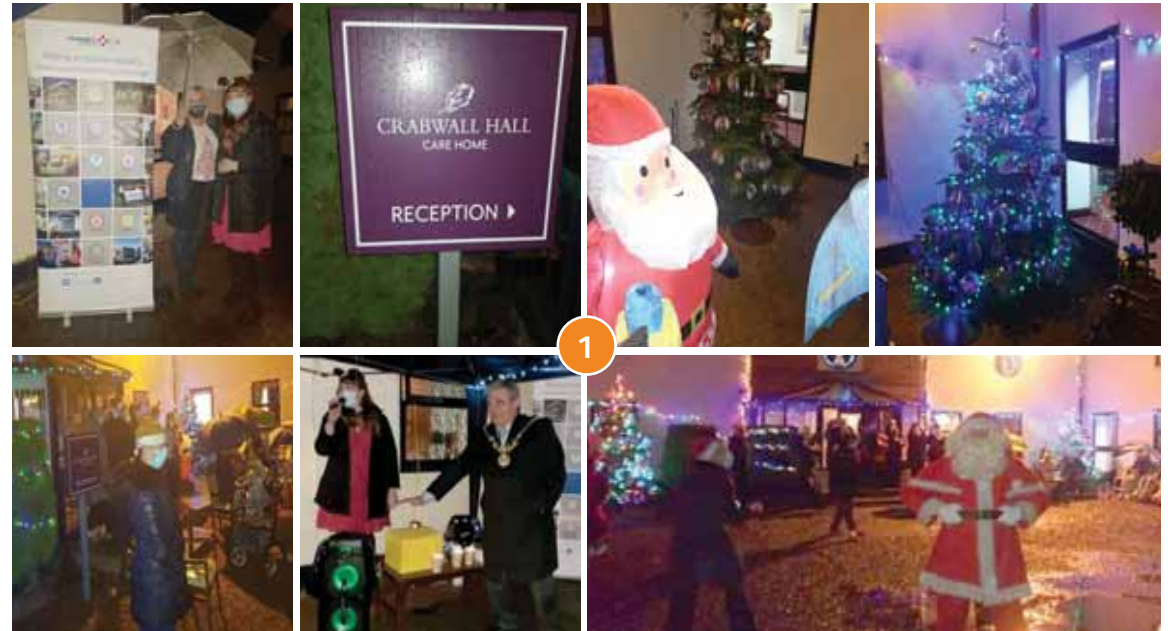
7 Training Weeks



20 Employment Opportunities



£5.3m Local Spend

1 CRABWALL HALL CARE HOME XMAS DONATION

Donation of £200 worth of Xmas decorations for the Crab wall Hall Care Home, the money paid for two large real trees plus decorations and lights following a hard depressing year for the residents and staff, lights were switched on by the Mayor of Chester.



2 XMAS JUMPER DAY

£50 donated to The Trussell Trust Foodbank in Ellesmere Port.



3



3 FOODBANK COLLECTION FOR THE LOCAL TRUSSELL TRUST

We partnered with our local sub-contractor Ruttle and consultants Gleeds to collect food and much needed essentials for the Trussell Trust Food Bank.



4



4 OASIS YOUTH CENTRE, ELLESMERE PORT

We are replacing a container to store equipment for the local Oasis Youth centre in Ellesmere Port. The old container is currently leaking, causing considerable water damage to the contents.

The local youth community serve over 300 members weekly pre Covid-19 times, and people visit the centre for various activities such as dancing, weightlifting, bowling and youth clubs for all ages. The centre helps to keep local children off the streets, giving them opportunity and support.

5 ELLESMERE PORT HUB GIVES NEW OPPORTUNITIES FOR LOCAL BUSINESSES

Cheshire West and Chester Council’s Work Zone team are working closely with VINCI Construction UK to ensure jobs can be secured locally and the necessary training offered. The first phase of works had a small work force which is due to increase this year.

VINCI Construction UK’s team have attended a talk on careers in construction with a group of job seekers arranged via the Work Zone. Contact has also been made with local schools and colleges for future site visits, talks on careers and opportunities in construction for year 10 and 11 students. There are plans to arrange a number of virtual presentations whilst COVID restriction prevent site visits.



“ Councillor Carol Gahan, Cabinet Member for Legal and Finance said:
The reports from site are very encouraging, construction has been one of the essential business areas permitted to continue during the COVID restrictions. What this means is there is local work for other businesses and new employment opportunities as the new building progresses. ”

6 STUDENTS GET ACCESS TO TWO MAJOR CONSTRUCTION SITES

We have partnered with Cheshire College - South & West Students to support their students studying Level 3 Construction by providing access to both the Ellesmere Port Chester Northgate and construction sites.

The students course covers everything from surveying and design to material technology. 17 students across two Campuses are meeting online for conversations with the VINCI team. By April it's hoped the students will be able to visit in person with the College virtually overlooking the construction site.

Silke Novak, HE Lecturer & FE Tutor said: *"We have been going to the Chester VINCI site so far and are looking forward to getting to see the Ellesmere Port site too. VINCI have been so supportive in letting us visit both remotely and distancing onsite when permitted. We get to directly see developments evolve over time and speak to the different professions directly involved in the industry which is great. Personally, I feel the biggest benefit is the exposure to seeing new methods and technology in action on site."*

Student, Adam Reynolds, from Chester said: *"During visits I've learnt about the logistics of construction, the complexities of running a building site and the lengths construction goes to make sure they have the right pieces from the right places all fitted into the time slots."*

Adam is hoping to work as a CAD Technician or to become a Structural Engineer after his studies.



Councillor Richard Beacham, Cabinet Member for Inclusive Growth, Economy & Regeneration said:

In order to maximise value for money for local taxpayers, the Council now includes a 'social value' requirement on large contracts. For our current construction projects in Ellesmere Port and Chester for example, the contractor has been asked to 'give something back' to the local community and this has included skilled members from the VINCI team taking time out to work on much smaller projects in the community, or the sites offering learning opportunities for local students.

Being able to give local young people first-hand access to live sites is a fantastic opportunity that doesn't happen all the time. During both projects in Chester and Ellesmere Port the VINCI team has been working with local schools and the college to provide an insight into the multitude of career opportunities in their industry.

Both sites have also welcomed Apprentices onsite and recently University students have also been working side by side with the VINCI team.



7 VINCI'S VERY OWN 'DRAGONS DEN' WITH ASPIRING YOUNG INVENTORS!

A number of the VINCI's Ellesmere port team changed their career for a day, stepping into the shoes of becoming VINCI's in house 'Dragons'. Emulating Deborah Meaden and Peter Jones, the team judged pitches prepared by groups from Ellesmere Port's local primary schools. The teams were given a brief to design a new eco-friendly form of transport whilst also utilising a shipping container.

The event was organised by Make It! Who set up initiatives with local councils, to inspire young children into the world of manufacturing. The challenge aims to encourage decision making, in which a virtual company is created with Managing Director, Marketing Manager and Designer to devise, develop and create a brand identity for their product.

From 'Bolt Bikes' to H2O Go!' children came up with a plethora of weird and wonderful transportation ideas and truly innovative solutions.



Carol Vella, Snr Economic Development Officer, Cheshire West and Chester Council said:

Praise to all for the enthusiasm and commitment to their roles as 'dragons' and great to have two members of your team who are fabulous examples of Ellesmere Port grown talent, I look forward to the High School session in a week of two.



We are proud that we can support CWaC and local charities and enterprises in the borough through our unique VINCI UK Foundation.

The foundation supports groups and charities that work to tackle social exclusion, foster community integration and improve access to employment and housing.

The Foundation launched in early 2016 to provide skilled volunteers and support good causes through grants and help for charities to purchase or upgrade much needed resources such as tools, equipment or transport and refurbish their facilities which in turn improves the lives of the most vulnerable and disadvantaged people in society.

Through collaboration with the CWaC project social value steering group we have supported the following charities with their applications amounting to £40,000, successful applicants to be confirmed in September 2021.

PRINCES VILLA FOOTBALL CLUB, ELLESMERE PORT

They are a very successful grass-roots, community football club who operate largely from the Mill Lane Playing Fields in Ellesmere Port. They currently occupy the venue under licence from ourselves but we are close to finalising a longer term lease arrangement with them. They have aspirations for the site to improve the facilities.

ACTION TRANSPORT THEATRE, ELLESMERE PORT

They occupy Whitby Hall in Whitby Park which is currently undergoing a major refurbishment / extension project. The group specialise in access to the arts for children and young people.

THE BOATY THEATRE COMPANY, ELLESMERE PORT

They are based in the Community Hub on Whitby Road (opposite Civic Way). They are a small community arts group.

HOSPICE OF GOOD SHEPHERD, CHESTER

The hospice provided best quality of life and the best quality end of life care, free of charge for the communities of Cheshire West, Chester, Ellesmere Port and Deeside.

HEALTH BOX, ELLESMERE PORT

A Community Interest Company that exists with the aim to provide health and wellbeing services to all aspects of the community. Most importantly, hosting a multidisciplinary team from public health nutritionists, yoga instructors, counsellors.





Andrew Shelmerdine, Framework Manager

VINCI Construction UK Limited

Ditton Road, Widnes, Cheshire WA8 0PG

Email: Andrew.Shelmerdine@vinciconstruction.co.uk | Mobile: 07833 048 451

www.vinciconstruction.co.uk